

preserved  
land  
(old  
Princeton)

heated houses

OFFICE

barn

loading

ferns

(heated)

SOLAR

perennials

# Pleasant Run Nursery

NEW PLANTS 2026







## Warm Greetings from Pleasant Run Nursery

To our treasured friends, customers and colleagues:

As 2025 draws to a close, we at Pleasant Run Nursery want to thank all of you for yet another fun and successful year! We have made a concerted effort to dramatically increase production numbers of key varieties while also fiddling with the weird stuff that we all love to play around with. At heart we will always be a plant collector nursery – ‘cause really, what can be more fun than experimenting in our own personal gardens -- and we are so thankful that we are able to share these oddballs with you too! I personally love the chase and trial of new things, so please, please, please let us know if there is something we should be trying or providing for you.

This year has also been one of tectonic change at the farm. Our dear friend and head of plant procurement, Kristin Elinich (K -Rock) decided on a career change and we all wish her the best in her future endeavors. The result of this has been that we were lucky enough to find two new coworkers in Tim Lee and Kelly DeLura. As our resident Sales Guru and Gardener Extraordinaire you all have hopefully had the chance to meet Tim, or at least chat with him over the phone this year. He has been a wonderful and welcome addition to our sales team and we are grateful to have him working with us. Kelly was gracious enough to accept the position of Inventory Manager at the Pleasant Run and frankly we would not be able to function without her! The result of her dedication and hard work is more accurate availability and sizing as well as a grounding force in what is otherwise a rodeo called production. While Kelly is more behind the curtains than Tim, we really hope you get to meet her while visiting the farm.

As we grow and evolve over the years, I can't help but be reminded of the fact that none of this would have been possible without the dedication and support of my parents. Richard and Heidi have been retired for a few years now but their presence on the farm still helps guide who and what we are today. They truly built one hell of a legacy and we are all honored that they were willing to pass the torch on to us. So next time you are at the farm, please be sure to say "hey," as it is almost guaranteed they will be futzing around in one of the gardens.


So once again, thank you all for being such wonderful friends and cohorts. I can't wait to work with you all again in 2026. Finally, I also want to say thank you to the wonderful team at our farm who make the day to day so much fun. It takes a village to raise an idiot and lord knows where I would be without the support of you all! Thank you.

Regards,

Carl S. Hesselein  
President



**PLEASANT RUN NURSERY, INC.**  
93 Ellisdale Road, PO Box 247, Allentown, NJ 08501  
P: 609-259-8585  
[info@pleasantrunnursery.com](mailto:info@pleasantrunnursery.com)





### March through December Hours:

(March hours dependent on weather)

Monday - Friday | 7am - 4pm

(Closed for loading 12pm-1pm)

**CLOSED SATURDAY & SUNDAY**

### January & February Hours:

Monday - Friday | 8am - 3pm

*If you have any questions,  
please don't hesitate to reach out.*



## OUR TEAM

**Carl Hesselein** | President  
carl@pleasantrunnursery.com

**Susan Schlagel** | Operational Accounting  
& Office Manager  
susan@pleasantrunnursery.com

**Lisa Strovinsky, CNLP** | Website, Logistics,  
& Customer Service  
lisa@pleasantrunnursery.com

**Tim Lee** | Sales & Customer Service  
tim@pleasantrunnursery.com

**Trevor Provost** | Production Manager  
trevor@pleasantrunnursery.com

**Kate Irvine, THP, CNLP** | Creative Director  
kate@pleasantrunnursery.com

**Kenny Dilts** | Perennial Production  
kenny@pleasantrunnursery.com

**Kelly DeLura** | Inventory Manager  
kelly@pleasantrunnursery.com

**Jim Hesselein** | Facilities Manager  
jim@pleasantrunnursery.com



## GUIDE TO ICONS



Sun



Part Shade/Shade Tolerant



Shade



Deer Resistant



Heat Tolerant



Native



Salt Tolerant



## PLEASE DO NOT BRING YOUR PETS TO THE NURSERY.

We have multiple dogs, chickens, peacocks, and other animals roaming the nursery, and are concerned about not only their safety but the wellbeing of other visiting customers.

Please leave your furry friends at home & enjoy our menagerie of animals that we have lingering about!  
We appreciate your cooperation.



# Herbaceous Plants

Our wide variety of herbaceous perennials, biennials, and hardy annuals are suited for a wide range of landscapes and gardens.

From native straight species to rare and hard-to-find ornamentals, we've got a little bit of something for everyone.



## Asclepias tuberosa 'Hello Yellow'

North American native perennial boasting abundant umbels of golden yellow flowers from mid-June to September above dense clumps of medium green foliage. Wonderful for attracting bees, butterflies and many other pollinators throughout the summer; resulting seedpods are ornamental in both the landscape and seasonal arrangements. Deer resistant.



**Zone: 4 | H: 24" | S: 24"**

## Aster laevis

Smooth, somewhat blue-green foliage and stems give way to pale bluish-lavender daisy-like flowers from August to October that attract various pollinators. Suitable for rocky, disturbed soils and erosion-prone sites. (syn. Symphyotrichum laevis)



**Zone: 4 | H: 36" | S: 18"**




## Achillea millefolium New Vintage™ Terracotta

An adaptable and low maintenance perennial selection perfect for rock gardens, xeriscaping, or container plantings. Prized for its compact, upright growth habit and long-blooming clusters of soft orange flowers that mature to champagne yellow from May to September. Great for pollinators. Fragrant flowers and foliage deter deer and rabbits.

**Zone: 4 | H: 26" | S: 12"** 


## Alstroemeria Summer Break

Florist-quality pink-and-creamy white flowers remain upright above medium-green foliage from July to September. Attractive to pollinators. Requires good soil drainage and winter protection. Long-lasting cut flowers. ('Tessumbreak')

**Zone: 6 | H: 36" | S: 30"** 


## Alstroemeria Summer Breeze

Warm multi-colored flowers feature golds, oranges and purples above purple-black foliage from July to September. Attractive to pollinators. Requires good soil drainage and winter protection. Long-lasting cut flowers. ('Tessumbre')

**Zone: 6 | H: 36" | S: 30"** 


## Alstroemeria Summer Heat

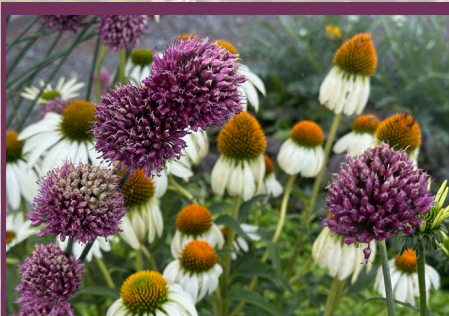
Long-lasting and abundant bright red flowers with yellow centers bloom from July to September. Attractive to pollinators. Requires good soil drainage and winter protection. Excellent cut flowers. ('Tessumheat')

**Zone: 6 | H: 36" | S: 30"** 

## Allium wulfenianum 'Golden Spring'

A profuse blanket of gigantic, bright yellow flower clusters cover semi-evergreen blue-green foliage from April into May. Highly tolerant of drought, reliably cold hardy. Great for borders of rock gardens, softening edges along walkways and adding filler to container plantings. Deer and rabbit resistant. (PP25710)

**Zone: 3 | H: 8" | S: 14"** 



## Allium sphaerocephalon

Green to purplish-magenta ball-shaped inflorescences appear from June to July atop wiry cylindrical stems and strappy, fragrant blue-green foliage. A versatile perennial capable of growing under a variety of conditions including dry, drought-prone soils. Deer and rabbit resistant.

**Zone: 4 | H: 14" | S: 14"** 





### **Blephilia ciliata**

A particularly drought tolerant native mint plant capable of withstanding high pH, limestone, clay, loam, or rocky soils in full or part sun. Intermittently spaced whorls of small, light pinkish-purple flowers bloom from June to July on thick, hairy stems which help to hold the inflorescences upright. Wonderful nectar source for many native bees and other pollinators.



**Zone: 4 | H: 28" | S: 12"**

### **Boltonia asteroides**

Profusely blooming native perennial with a preference for moist and wet sites. White, sometimes violet or pink, daisy-like flowers bloom from August to frost above narrow, grey-green leaves and stems. Attractive to many different pollinating insects and songbirds. Deer resistant. Tolerant of occasional flood conditions.



**Zone: 4 | H: 5' | S: 3"**

### **Eupatorium fistulosum 'Jojo'**

A native perennial chosen for its compact habit and long bloom time, with clusters of pink flowers lasting for 6-8 weeks from late July to September. Although sterile, provides pollinator support when planted around flowering summertime perennials. Deer and rabbit resistant. Tolerant of clay soils. (PP34665)

**Zone: 4 | H: 40" | S: 30"**



### **Echinacea purpurea 'Sweet Sandia'**

Compact and well-behaved native perennial with watermelon-colored daisy flowers. Green-to-reddish pink rays bloom consistently from July to October, attracting pollinators throughout summer and early fall. Deer resistant. (TNECHSS)



**Zone: 4 | H: 20" | S: 16"**

### **Epimedium 'Cranberry Dancer'**

Flowering evergreen featuring beautiful, profuse branches of spurred, burgundy red flowers with rosy red sepals and yellow tips from April to late May above lanceolate, medium green foliage. Dry shade tolerant. Deer and rabbit resistant.



**Zone: 4 | H: 20" | S: 24"**

### **Epimedium 'Jester's Hat'**

Beautiful, upright sprays of nodding, golden yellow spurred blooms with rosy red sepals emerge in April and May above bright evergreen foliage. Creates a dense mounding groundcover as it ages; foliage becomes slightly burgundy with cooler weather. Great for dry shade gardens. Deer and rabbit resistant.



**Zone: 4 | H: 20" | S: 24"**



### **Eupatorium perfoliatum**

A tough, low maintenance native perennial that reaches up to 6' and forms colonies in consistently moist and wet soils. Flat-topped clusters of fluffy white flowers from July to September attract many pollinators. Tolerant of occasional flooding. Deer and rabbit resistant.



**Zone: 4 | H: 5' | S: 4"**



### **Gaura lindheimeri Gaudi™ Red**

A compact, well-branching, native perennial with a months-long bloomtime from June into October. Raspberry red flowers whirl about on reddish-grey stems and attract bees, butterflies, and hummingbirds. Foliage is green mottled with burgundy tones. (Florgaure)



**Zone: 4 | H: 12" | S: 24"**

### **Geranium pratense 'Midnight Ghost'**

A unique and compact groundcover perennial. Ghostly white flowers with bluish veins appear from May to July above deep purple foliage, reaching a mature height of only 8". Shade and drought tolerant once established. Deer and rabbit resistant.

**Zone: 4 | H: 6" | S: 12"**





We often get asked about plants that thrive in chaotic conditions, from drought-riddled hellstrips to tree pits that are magnets for dog urine, and even nutrient-poor urban sites with compacted soils and the occasional spray of winter salt to be concerned with. We've compiled some helpful guides to help you navigate through a few of these hellish site conditions, proving that you can still make beautiful landscape designs - even during a looming apocalypse.

# APOCALYPSE NOW

## PLANTS FOR THE HELLSCAPE

### BOTANICAL

### COMMON

### LIGHT & SOIL

### RESISTANCE

<i>Achillea millefolium</i>	yarrow	☼	medium - dry	poor soil, salinity, deer, drought
<i>Andropogon</i> sp.	big bluestem	☼	medium - dry	poor soil, drought, erosion
<i>Asclepias syriaca</i>	common milkweed	☼	medium - dry	poor soil, deer, drought, erosion
<i>Bouteloua curtipendula</i>	sideoats grama	☼☼	medium - dry	heat, drought, erosion, juglone
<i>Celtis occidentalis</i>	hackberry	☼☼	medium - dry	wet soils, drought, urban sites
<i>Coreopsis lanceolata</i>	lanceleaf tickseed	☼	medium - dry	poor soil, heat, deer, drought
<i>Dalea purpurea</i>	purple prairie clove	☼	sandy, rocky   dry	drought, erosion
<i>Echinacea purpurea</i>	purple coneflower	☼	medium - dry	poor soil, heat, salt, deer, drought
<i>Elymus virginicus</i>	Virginia wild rye	☼	heavy   medium - dry	disturbed soils, erosion
<i>Festuca rubra</i>	red fescue	☼☼	sandy   medium - dry	phytoremediation, salt, erosion
<i>Heliopsis helianthoides</i>	oxeye sunflower	☼☼	medium - dry	poor soil, deer, drought, erosion
<i>Juniperus virginiana</i>	Eastern redcedar	☼☼	rocky, sandy   medium - dry	poor soil, salinity, deer, drought
<i>Monarda</i> sp.	bee balm	☼☼	medium - dry	deer, drought
<i>Muhlenbergia capillaris</i>	muhlygrass	☼	sandy   medium - dry	fire, salinity, drought
<i>Panicum virgatum</i>	switch grass	☼☼	heavy   medium - dry	poor drainage, compaction
<i>Penstemon digitalis</i>	foxglove beardtongue	☼☼	moist - dry	deer, drought
<i>Pycnanthemum tenuifolium</i>	slender mountain mint	☼☼	moist - dry	wet soils, drought, erosion
<i>Rhus</i> sp.	sumac	☼☼	medium - dry	deer, drought, erosion
<i>Rudbeckia hirta</i>	black-eyed Susan	☼	moist - dry	disturbed soils, salt, deer, drought
<i>Schizachyrium scoparium</i>	little bluestem	☼☼	medium - dry	fire, drought, erosion, grazing
<i>Solidago nemoralis</i>	grey goldenrod	☼☼	rocky, sandy   dry	deer, drought
<i>Sorghastrum nutans</i>	Indiangrass	☼☼	medium - dry	poor soil, salinity, drought, erosion





# BARKITECTURE

Tested by landscape architects in the field, these tried and true selections are ideal for urban tree pits and sidewalk gardens that are prone to dog urine. Several analyses have proven these particular selections will hold up in even some of the toughest conditions.



**SPRING**

Plant selections shown have been found to be resistant to high nitrogen and salt content within inner-city microclimates. Salt analysis is in reference to the typical amount of dog urine an urban tree pit would see on an annual basis. Plants listed below have shown tolerance of and resistance to these adverse conditions and should be considered for difficult inner-city soils.



**SUMMER**



**AUTUMN**

## PEE PLANT LIST

*Achillea millefolium*  
*Bouteloua curtipendula*  
*Cornus sericea*  
*Eupatorium perfoliatum*  
*Euphorbia amygdaloides* var. *robbiae*  
*Ilex verticillata*  
*Juniperus horizontalis*  
*Lavandula sp.*  
*Monarda didyma*  
*Penstemon digitalis*  
*Rhus aromatica*  
*Sedum sp.*  
*Solidago sp.*  
*Vaccinium corymbosum*



**WINTER**



### Heuchera villosa 'Bronze Wave'

A spectacular compact groundcover featuring bronzy foliage with purple undersides and profuse upright inflorescences with creamy tan flowers from September to October. Deer resistant and drought tolerant. Ideal for full or partial shade. 🐇☀️☁️N

**Zone: 4 | H: 18" | S: 24"**

### Hypericum prolificum

Tough, Mid-Atlantic semi-evergreen shrub with a mounding, compact habit perfect for many difficult sites. Many bright yellow, five-petaled flowers with bushy centers of wiry stamens from June to August, followed by reddish capsules. Pollinator & bird friendly. Tolerant of compaction, drought, black walnut. Suitable for stabilizing erosion-prone soils. ☀️☁️🐇N

**Zone: 4 | H: 3' | S: 2'**

### Iris 'Purring Tiger'

Dusty lavender-purple flowers with striped yellow outer petals bloom above strappy blue-green foliage from early June into July. Compact selection perfect for rain gardens or moist woodland gardens where it is both deer and juglone resistant. 🐇☀️☁️

**Zone: 4 | H: 18" | S: 20"**

### Lavandula stoechas 'Anouk Burgundy'

Unexpected burgundy flowers appear above low-growing, compact clumps of silvery blue-green, lanceolate foliage from June to August. Highly resistant to foliar diseases. Deer resistant. ('Anouk Deluxe 202001') (PPAF)

**Zone: 4 | H: 16" | S: 12"** 🐇☀️🧴

### Liatris pycnostachya

North American prairie perennial loaded with upright spikes of feathery purple flowers from July to September that are beloved by many different pollinators. Slender, grass-like foliage and vertical branching structure adds texture to the landscape when not in bloom. Tolerant of drought, poor soils, and summer heat and humidity. ☀️🐇N

**Zone: 4 | H: 48" | S: 18"**



### Liatris pycnostachya 'Lavender Glowsticks'

A stunning native prairie perennial perfect for full sun dry sites begging for a pop of color. From July to September, vertical stalks covered with large, individual clusters of feathery purple flowers appear above slender, grass-like foliage, standing over 4' at maximum height. Tolerant of drought and summer heat and humidity.

**Zone: 4 | H: 48" | S: 18"** ☀️🐇N

### Pycnanthemum 'Smokey Mountain Mint'

A lovely, purple-leaved selection of a favorite native perennial. Flowers with silvery bracts appear from late June well into early October. Great for pollinator gardens. Deer resistant. (PPAF)

**Zone: 4 | H: 24" | S: 24"** 🐇☀️☁️



### Rudbeckia hirta 'Prairie Sun'

Large tangerine-and-lemon yellow flowers with bright green centers bloom for a long period of time between June and September overtop of pubescent, medium green, paddle-shaped foliage. Tolerant of many soil types and drought once established. Deer resistant.

**Zone: 4 | H: 30" | S: 20"** 🐇☀️N

### Rudbeckia hirta 'Sonora'

Eye-catching dark brown flowers with yellow tips appear from June to September above stiffly hairy, medium green foliage. A tough, deer and disease resistant workhorse for the landscape or container.



**Zone: 4  
H: 20"  
S: 20"**



### Ruellia elegans 'Ragin' Cajun'

Stunning, bright red flowers bloom virtually all growing season from early May to the first frost of autumn overtop of slightly hairy, deep green foliage that forms a mounding, spreading patch. Heat and humidity resistant.

**Zone: 4 | H: 24" | S: 24"** ☀️🐇N





### **Sanguisorba 'Plum Drops'**

Curious, plum-purple inflorescences reminiscent of small cattails bloom on wiry stems above deep green pinnate foliage from late July to early September. Suitable for pollinator gardens. Deer resistant. (PP36497)



**Zone: 4 | H: 36" | S: 24"**



### **Scutellaria incana 'Prairie Snow'**

Bright white flowers appear on loose racemes from July to September above downy, medium green foliage and stems. Capable of growing in clay, dry soils, drought prone conditions, and part shade. Deer resistant.



**Zone: 4 | H: 24" | S: 18"**



### **Sedum 'Night Light'**

An upright, dome-shaped succulent perennial with dark purple stems and foliage with hints of olive green, topped by long-lasting terminal flowerbud clusters in late summer and early fall that bloom to bright yellow and fade to blush pink. Rabbit resistant. Tolerant of drought, salt, poor, alkaline, and acidic soils. (PP34272)



**Zone: 4 | H: 24" | S: 32"**



### **Silene virginica**

An uncommonly used and rare native perennial boasting scarlet red, five-petaled flowers from April to June on erect, somewhat sticky stems above slender green foliage. Attractive to hummingbirds. great selection for dry, part shade sites, open woodlands, and rocky slopes.

**Zone: 4 | H: 14" | S: 12"**

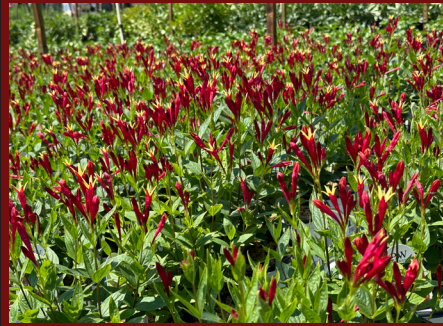


### **Spigelia marilandica 'Apple Slices'**

A stunning native perennial featuring dark, wine red flowers with bright yellow centers bloom consistently from May to September above dark green foliage. Great for specimen gardens, woodland gardens, container plantings. Attractive to hummingbirds. (PP36254)



**Zone: 4 | H: 20" | S: 16"**



### **Spigelia marilandica 'Orange Slices'**

Bright, orange-red flowers with yellow centers attract hummingbirds to the part shade cottage or woodland garden from May to September. A compact, shorter selection perfect for containers or planting as a specimen in the perennial border. (PP36721)

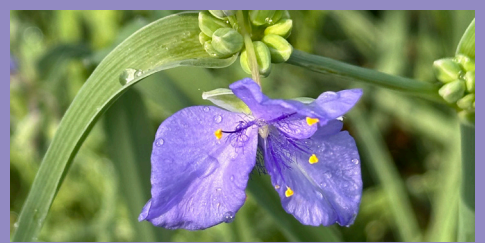
**Zone: 4 | H: 18" | S: 16"**



### **Stylophorum diphyllum**

An Eastern woodland native perennial with yellow, four-petaled flowers from April to June followed by bristly seed pods that hang intermixed with blue-green, deeply lobed foliage. Seeds are eaten by chipmunks and other small mammals, and will spread freely. Tolerant of partial to heavy shade.

**Zone: 4 | H: 14" | S: 10"**



### **Tradescantia ohiensis**

A widespread North American perennial forming short-lived, but consistently blooming purple flowers from March to September above strappy, blue-green foliage. Grows well in a wide variety of soil types, and is tolerant of part shade. Beneficial for native bee species.

**Zone: 4 | H: 30" | S: 20"**



### **Tradescantia virginiana**

A versatile and adaptable North America clumping perennial with a wide geographical range. Easily grown in moist, average, dry, occasionally wet, rocky, clay, and even poor soils as well as heavy shade. Short-lived but consistent bluish-purple, three-petaled flowers bloom from March into August and into September over dark green, strappy linear foliage.

**Zone: 4 | H: 30" | S: 12"**



### **Verbena hastata 'Pink Spires'**

Facultative wetland native perennial with wand-like inflorescences each loaded with tiny, rose pink florets that are tubular in shape and attractive to pollinators. Suitable for moist to wet soils in full sun. Tolerant of low-lying, disturbed soils. Deer resistant.

**Zone: 4 | H: 40" | S: 20"**



### **Verbena officinalis 'Bampton'**

Abundant spike-like inflorescences loaded with tiny pink florets erupt from July to September over bronzy green foliage that becomes a lovely dark purple in autumn. Very floriferous and low maintenance, ideal for eclectic cottage gardens, containers, and cut flower arrangements. Deer resistant.

**Zone: 4 | H: 24" | S: 18"**





# CONTRACT GROWING

***Let us help with your  
large installation projects.***

Get in touch with us to schedule your custom contract growing order and let us be your premier grower of the ferns, grasses, perennials, vines, shrubs, trees and tropicals you need.

We'll grow just about anything you require in any quantity necessary, from quart-sized to 30-gallon containers, all from start to finish.

All of our plants are grown with our custom soilless (and peatless) mix, slow release fertilizer, and personalized care, to ensure a quality product each and every time.

Please feel free to contact Carl Hesselein at  
609-259-8585 x103 or  
[carl@pleasantrunnursery.com](mailto:carl@pleasantrunnursery.com) to discuss.



**No matter the size of the project,  
No matter the quantity of plants,  
We'll grow exactly what you need.  
No fuss.  
No hassle.  
No matter what.**

*"Everyone at Pleasant Run exhibits expertise, reliability, and genuine passion for sustainability and quality.*

*...their ability to source and propagate rare and difficult species for the Lower Manhattan Coastal Resiliency Project, a landmark initiative protecting New York City from rising sea levels and storm surges [has been] vital to safeguarding Lower Manhattan's neighborhoods for generations to come, and their contribution shows their commitment to their communities both horticulturally and civilly (project is ongoing; est. completion 2027).*

*This project required a massive custom grow. Kenny and his team's ability to not only accommodate this work, but deliver plants of such exceptional quality truly shows this nursery's commitment to the restoration and expansion of green spaces throughout our world.*

*Their professionalism, transparency, and dedication make them trusted partners and masters of their craft."*

*- Brittney Tasche, Northeast Regional Development - Brightview Landscape*





# Woody Ornamentals

Whether you're in need of 3-gallon native shrubs or 30-gallon ornamental specimen trees, our massive selection of container-grown woody plants is curated to complete or accentuate any garden, container, or landscape project.

## **Amorpha fruticosa**

Fast growing and adaptable native shrub that suits a wide variety of site conditions. Suckers to create a dense thicket. Candle-like racemes of bluish-purple flowers bloom from May to June and are attractive to bees and butterflies. Soft grey-green pinnately compound foliage has a velvety texture on the undersides, making it unattractive to deer. Fantastic larval host for butterflies. Pollination source for specialist bees. Dry and wet soil tolerant.

**Zone: 4 | H: 12' | S: 10'**



## **Betula platyphylla Parkland Pillar®**

A beautiful and structurally appealing columnar tree packed with dense green foliage that becomes golden yellow in fall before revealing the bright white mature bark beneath. Tolerant of drought, heat, alkaline soils, and urban conditions. Suitable for screening or as an accent tree. ('Jefpark') (PP25468)

**Zone: 4 | H: 30' | S: 8'**



## **Castanea dentata**

A North American shade tree once found throughout a wide swath of Eastern hardwood forests. Although not extinct, blight has greatly depleted natural communities of this tree. An important ecological species for fruit production. Deer and black walnut resistant.



**Zone: 4 | H: 60' | S: 60'**



## **x Chitalpa El Nino®**

A stunning, small to medium sized ornamental tree selected for its impeccable hardiness and floriferous nature. Pink to magenta orchid-like flowers bloom consistently from June to August over medium green foliage and offer a melon-vanilla fragrance. Heat, drought, and deer tolerant. Disease resistant. ('NJxC1') (PP35880)

**Zone: 4 | H: 10' | S: 8'**



## **Corylus americana**

A native multi-stemmed shrub with a fast-growing, low-maintenance habit making it perfect for deciduous hedges. Yellow-brown male catkins emerge in March at the end of winter alongside inconspicuous dark red female catkins. Foliage is large, ovate, and dark green throughout the growing season, becoming a rainbow of red, orange, yellow, purple, and green in fall. Edible nuts can be harvested at maturity from September to October. Wonderful wildlife resource.

**Zone: 4 | H: 12' | S: 8'**



## **Cornus amomum**

Functional, beautiful, and no-nonsense. A native deciduous multi-stemmed shrub with attractive clusters of creamy-white flowers from May to June followed by showy dark blue fruits in late August and September that are eaten by birds and mammals. No fuss and easy to grow in many conditions. Resistant to drought, compacted soils, wet soils, heat, deer browse, and black walnut allelochemicals. A fantastic selection for virtually any difficult growing area.

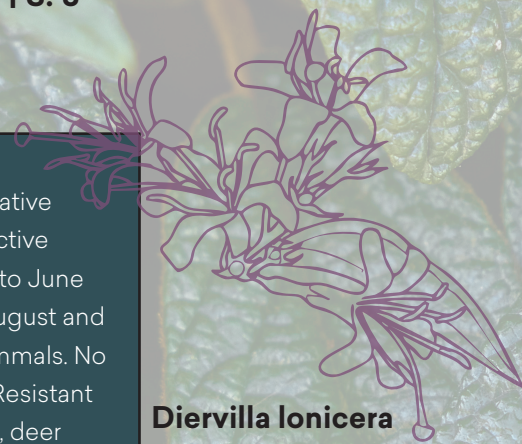
**Zone: 4 | H: 8' | S: 8'**



## **Diervilla lonicera**

North American native shrub capable of producing dense thickets in dry, rocky soils. Small, lemon yellow, tubular flowers that are attractive to pollinators bloom from June to August before becoming reddish seed capsules that are eaten by birds. Drought and shade tolerant.

**Zone: 4 | H: 3' | S: 4'**







### Euonymus atropurpureus

A beautiful native shrub with showy red fruits in autumn and equally attractive purple and red fall foliage. Dark purple flowers bloom from May to June. Suitable for woodland sites with full, partial, or dappled shade and well draining soils.

**Zone: 4 | H: 15' | S: 20'**



### Lagerstroemia indica Bellini® Strawberry

A compact, mounded ornamental shrub with consistently medium green foliage that produces explosive clusters of bright red flowers from July to September. Vigorous growth paired with drought, deer, and disease resistance make it suitable for parks, gardens, and landscapes of all types. ('Strawconbel') (PP33517)

**Zone: 4 | H: 3' | S: 3'**



### Magnolia acuminata

A large native shade tree often found in mountainous woodlands and rocky slopes. Large, tropical-looking foliage emerges alongside the tulip-like yellow flowers which mature to lumpy, green cones resembling cucumbers in summer before splitting open to reveal shiny red seeds. Intolerant of urban conditions and compaction, but suitable for public parks, landscapes, and gardens with moist, well-draining soils.

**Zone: 4 | H: 50' | S: 30'**



"Pleasant Run Nursery has been an invaluable partner to Green City Works. Their team is consistently helpful in guiding our plant selections, offering expert insight that supports the success of our projects. They go above and beyond to source and recommend attractive native plants that not only enhance the beauty of our designs but also thrive in busy public spaces and challenging urban environments. The plants we receive from Pleasant Run are consistently healthy, robust, and of the highest quality. Their expertise and dedication make a real difference in the success of our projects."

- Brian English, University City District



### Hydrangea arborescens Incrediball® Storm Proof™

A deciduous flowering shrub selection chosen for its sturdy, compact, and round habit that hold the balls of white inflorescences stiffly aloft from late June to September. Stems and branches stay upright even during heavy seasonal rains. ('SMNHAGOV') (PP36788)

**Zone: 4 | H: 4' | S: 4'**



### Ilex glabra Squeeze Box®

An upright and pyramidal evergreen shrub with slightly curled, dark green, shiny foliage. For use as a specimen or unconventional hedge in the rain garden, container planting, or coastal garden. Tolerant of occasionally wet soils. ('SMNIGLA') (PP35019)

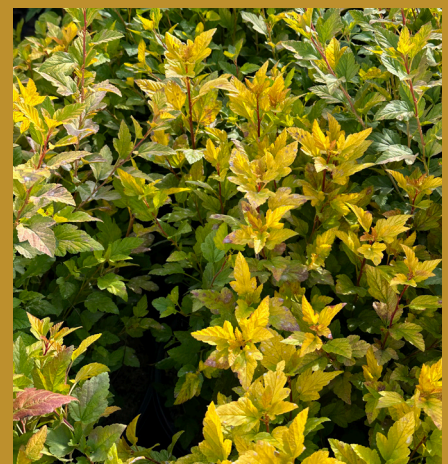
**Zone: 4 | H: 6' | S: 3'**



### Juniperus scopulorum 'Blue Arrow'

Narrow, columnar evergreen with upright sprays of dusty blue leaves that make a lovely backdrop in the formal garden. Tolerant of cold, drought, clay, salt, compacted soils. Resistant to deer and rabbits.

**Zone: 4 | H: 14' | S: 2'**



### Physocarpus opulifolius Lucky Devil®

A compact, mounding native shrub with yellow-green foliage throughout the growing season topped with small, pinkish-white flowers from April to June that become attractive, persistent red fruit capsules in late summer and autumn. Beautiful orange fall color. Adaptable to many different site conditions. Drought tolerant. ('ZELMichael') (PP34243)

**Zone: 4 | H: 4' | S: 4'**





### Salix discolor

Wet-soil-loving, dioecious native shrub featuring medium-green deciduous foliage in the growing season and white-to-yellow male catkins with yellow stamens. Tolerant of saturated soils and helpful for stabilizing erosion-prone soils. Catkins can be cut in spring as fresh flowers for indoor arrangements. Great for pollinators and wildlife.

**Zone: 4 | H: 12' | S: 8'** ☀️ ☁️ N

### Spiraea latifolia

North American native shrub typically found in moist, low-lying meadows and valleys, where it suckers to create a thicket of shiny green foliage on vase-shaped, arching branches topped with clusters of white flowers from June to September. Fall color is a golden yellow. Attractive to pollinators and songbirds. Tolerant of wet soils.

**Zone: 4 | H: 4' | S: 3'** ☀️ ☁️ N

### Viburnum prunifolium 'Dark Tower'

A unique native selection naturally inclined to be a small street tree with profuse clusters of bright white flowers in May followed by blue-black fruits that are loved by birds in autumn. Upright, pyramidal form with sturdy branching and thick, dark green foliage. Fall color is a mix of bright reds and oranges. Can be used as a specimen or in utility plantings under power lines.

☀️ ☁️ N

**Zone: 4 | H: 16' | S: 8'**

"I first visited Pleasant Run Nursery for a tour with Richard in 1998, the year it was carved out of surrounding parcels of Princeton Nurseries field stock, following a stop at Princeton's Allentown wholesale yard where Heidi was still working. Beyond their lovely house and gardens sat the simple core of the nursery at that time as I recall it — a modest heated greenhouse, a half dozen plastic hoop houses and, across the gravel drive, careful rows of shade plants assembled beneath a file of mature Chinese chestnut trees whose fallen nuts were welcomed fodder for Phoebe, the family pig.

Over the now many intervening years, it has been incredible to watch the expanding Pleasant Run universe's progress — an ever-widening array of plant offerings and attendant systems and hoop houses to maintain them, not to mention the growing menagerie. Immaculately produced Pleasant Run plants have played significant roles in so many of my projects and the nursery team — first with Richard and Heidi and now led by Carl, along with Lisa, Trevor, Susan, and so many other committed folks — has served as a committed partner in an ongoing dialogue for developing a diverse palette of plants for a host of dynamic landscape initiatives. One such example: when we named a Brooklyn Botanic Garden magnolia hybrid for former BBG president Judy Zuk, we gave the first batch of bud wood to Pleasant Run to get the tree into wider production — just one of many great magnolia varieties that the nursery produces. I remain grateful for what Pleasant Run does and look forward to its continued growth and development and to many more successful collaborations."

Patrick Cullina

Patrick Cullina Design + Consulting



Magnolia 'Judy Zuk'



**"Pleasant Run Nursery has the nicest plant inventory, large quantities, and is convenient to deal with."**

**"Their online ordering system allows me to work during non-business hours and I never have to worry about the quality of the plants."**

- Britney O'Donnell, Britney O'Donnell Garden Design





# Vines & Tropicals



## **Musa sikkimensis 'Ever Red'**

Cold hardy herbaceous perennial capable of reaching 13' at maturity with large, dark green-and-maroon-striped leaves give a tropical feel to the patio, poolside, or eclectic garden all summer long. A wonderful focal point for large container plantings or as a garden accent.

**Zone: 4 | H: 10' | S: 10'**



## **Parthenocissus quinquefolia var. engelmannii**

A wonderfully vigorous North American native vine suitable for woodland gardens, trellises, and shade gardens where it's able to climb or scramble about freely. Young tendrils and foliage emerge purple before fading to green throughout the growing season, taking on robust shades of bronzy red, orange, and yellow in autumn. Fruit is eaten by birds.

**Zone: 4 | H: 40' | S: 8'**



# Ferns & Grasses

## **Dryopteris ludoviciana**

A clumping native semi-evergreen fern with glossy fronds that performs best in moist, humid woodlands and partial to heavy shade. Capable of tolerating average garden soils so long as it receives part shade. Deer resistant.



**Zone: 4 | H: 36" | S: 28"**



## **Carex woodii**

Versatile, adaptable, low maintenance and no fuss sedge with emergent bluish-green foliage that matures to a rich green, topped by bottlebrush-like tannish-yellow inflorescences from April to May. Can be used as a lawn substitute or anywhere light foot traffic occurs. Deer resistant. Tolerant of full sun and full shade.

**Zone: 4 | H: 12" | S: 12"**



## **Molinia caerulea 'Edith Dudsus'**

An ornamental grass with multiple seasons of interest featuring arching, blackish-purple stems and airy purple panicles from September to October above clumps of well-behaved, slender green foliage that turn lovely shades of orange-yellow following the arrival of cooler weather. Resistant to deer, juglone, and light salt spray.

**Zone: 4 | H: 40" | S: 20"**



THE 2026 PERENNIAL  
PLANT OF THE YEAR®

**'BLACKHAWKS'**  
BIG BLUESTEM

*Andropogon gerardii*  
'Blackhawks' PP 27,949

4-5' HT  
1-2' WD

OUTSTANDING PURPLE  
TO BLACK FALL COLOR

TOLERANT OF DROUGHT, DEER,  
BLACK WALNUT, URBAN CONDITIONS,  
EROSION & DRY SOILS

GREAT FOR CONTAINERS, CUT FLOWER  
ARRANGEMENTS, & DIFFICULT FULL SUN  
SITES WITH POOR, DRY SOILS

EASY GROWING NATIVE GRASS  
PERFECT FOR ATTRACTING BIRDS





# FOR THE BIRDS

Whether you're a novice birder or an avian aficionado, ensuring the health and success of our native birds comes down to the availability of native plants in their habitats.

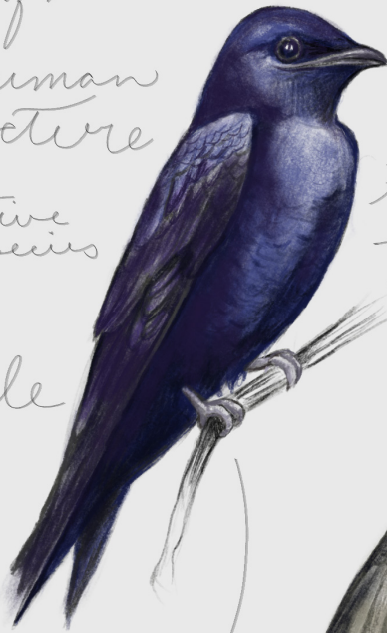
## Purple Martin (*Progne subis*)

Typically nest near  
bodies of water

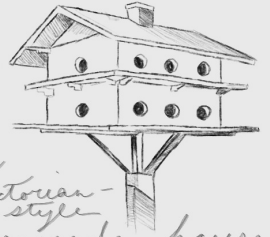
rely on human  
infrastructure

largest native  
sparrow species

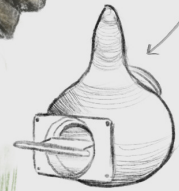
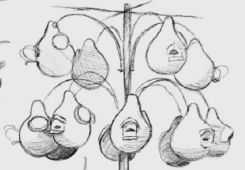
male



visit same nest  
site each year  
to raise young  
- generations  
of families



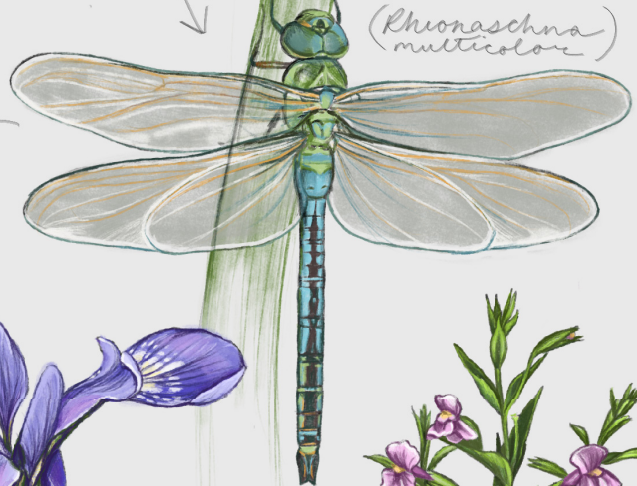
Victorian-  
style  
manmade houses  
- originated from  
indigenous use  
for pest  
control



gourd-  
style

female

dragonflies  
+ damselflies  
are favorites



Blue-eyed  
Darter  
(*Rhionaeschna  
multicolor*)

also eat  
mosquitos,  
midges, &  
other  
flying  
insects

Midge



preferred  
dragonfly prey

Mosquito



Rain  
garden



*Iris versicolor*

facultative  
wetland species  
→ Native to North  
America



*Mimulus ringens*



# Plants for the Mesic Woodstory

medium-  
dry soils  
part-to-  
full shade

*Actaea racemosa*  
*Anemone sylvestris*  
*Aquilegia canadensis*  
*Asarum canadense*  
*Chrysogonum virginianum*  
*Clematis virginiana*  
*Dicentra eximia*  
*Erythra (aster) divaricatus*  
*Lycium maculatum*  
*Phlox divaricatus*  
*Podophyllum*  
*peltatum*

*Pycnanthemum*  
*muticum*



(Clustered  
Mountain  
mint)

*Senecio (Packera) aureus*  
*Solidago caesia*  
*Spizella maculandica*  
*Zizia aptera*

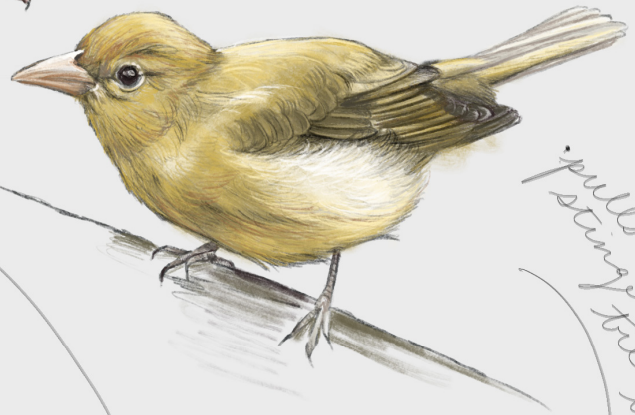
## Summer Tanager (*Piranga rubra*)



• common to  
open woodlands

• insectivores with a  
preference for wasps

• prefer fruits in  
winter



pulls out on  
stinger then  
before eating  
wasps

• pollinators of  
flowering  
woodland  
perennials

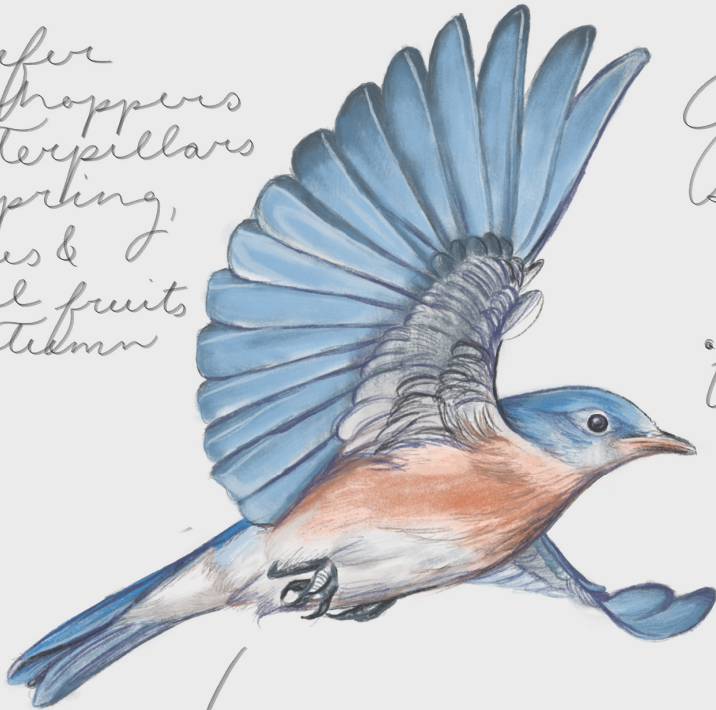


Blue-Winged  
Wasp  
(*Scolia dubia*)

• beneficial predator  
-parasitize beetle  
larvae  
-prefer Japanese beetle  
grub

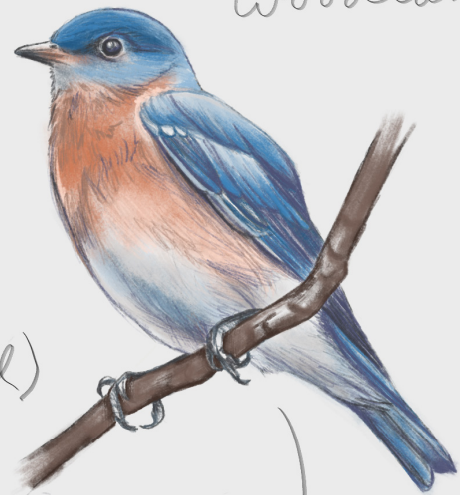


• prefer  
grasshoppers  
& caterpillars  
in spring,  
berries &  
small fruits  
in autumn



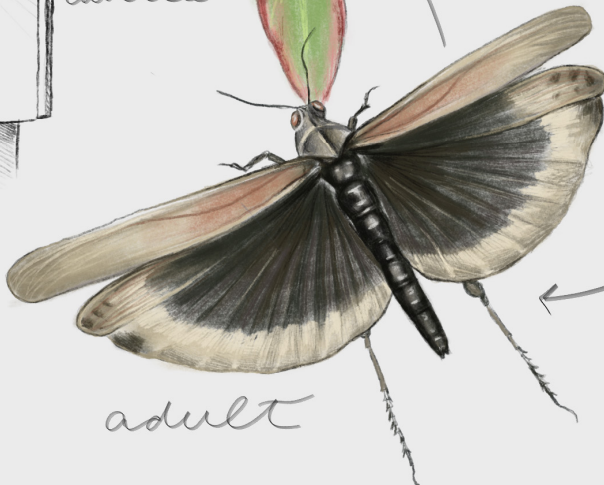
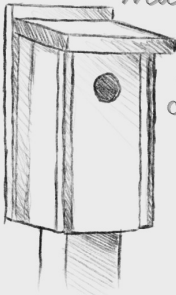
# Eastern Bluebird (*Sialia sialis*)

found across  
N. American  
clearings & open  
woodlands



*Cornus  
amomum*  
(silky  
dogwood)

nest in  
manmade  
boxes  
& tree  
cavities



adult



nymph

often found in  
dry, open habitats

Carolina grasshopper  
(*Dissosteira carolina*)



# Nursery Information

## TERMS & CONDITIONS



### New Customers

Pleasant Run Nursery is a wholesale nursery open to the trade. First orders at Pleasant Run Nursery are COD. The minimum order for pickup is \$500.

### Minimum Order Quantities

There is a six (6) plant minimum per individual item for #1 and #2 gallon material, and a four (4) plant minimum per individual item for #3 gallon material.

There is no minimum for #5 gallon+ materials.

*When ordering less than the minimum, please add:*

\$1 per plant for #1 and #2 gallon material

\$2 per plant for #3 gallon material



### Terms

Cash, Check, MasterCard, Visa, American Express or Discover until credit is established. Credit accounts are payable Net 30 days. 1.5% per month finance charge on all past due balances. Failure to pay finance charge can result in loss of credit. There is a 3% surcharge on credit cards. A \$25 fee will be charged for any returned checks.

### Claims

We guarantee that our plants are healthy and true to name upon leaving our nursery. All claims for losses are to be made within 10 days of delivery or pick up. Claims for damages or shortages must be made within 48 hours. All claims for non-viability in plants which are dormant must be made as soon as the plants can be determined to be non-viable. We will gladly correct any mistakes made by us. We do NOT accept returns unless it is a result of our error. In no case will our liability exceed the amount of purchase. The purchaser is always liable for freight charges.

### Client Visits

Since we are a wholesale nursery, we ask that you do not bring or send your customers to the nursery without our permission. Please feel free to call us with any questions you may have about your plant tagging needs.

### Sizing of Plants

Sizes noted are for approximate mature sizes in average landscape conditions. Growth will vary according to site, temperature, soil, and moisture conditions. In determining plant sizes on our nursery, we follow the "American Standard for Nursery Stock" published by the ANLA.



### Hardiness Zone

The zones in our catalog are based on the USDA's research performed and published within the USDA Hardiness Zone Map. We list the zones for coldest temperature which the specific plant will tolerate in normal Northeastern winter conditions.

### Cancellations/Postponements

We ask that you be sure of your pick up or delivery date before asking us to pull your order. Material canceled by the customer after the order has been acknowledged and pulled may be subject to a 25% restocking fee. If your order has been pulled and your job date is then delayed for 2 or more days, there may be a handling fee.

### Pre-Orders

Orders may be booked and held for 30 days in advance. If orders are not picked up or delivered after 30 days, they will be voided unless other arrangements have been made.

### Deliveries

Minimum order amount for delivery is \$1,500. Our delivery rates are based on flat mileage. All orders for delivery must be finalized by 12noon, 2 (two) business days prior to the delivery date. Any additions received after this deadline cannot be guaranteed to make the delivery. Claims for damages or shortages must be made within 48 hours. The customer is always responsible to meet the truck and offload plant material at the time which has been prearranged.







pleasant run  
nursery  
2026  
new plants

← pleasant run

grasses

ENTER →

← driverway →

↑  
woodies →

woodline →



93 Ellisdale Rd, PO Box 247  
Allentown, NJ 08501

(609) 259-8585

info@pleasantrunnursery.com

↓ Visit our website for our full selection of plants  
[www.pleasantrunnursery.com](http://www.pleasantrunnursery.com)